

**WE ARE . . .**

**ECLECTIC  
P H O T O  
S T U D I O S**

[www.eclecticphotostudios.com](http://www.eclecticphotostudios.com)

T H E  
L A R G E S T  
A N D M O S T  
D I V E R S E  
P R O P  
H O U S E

**AND PHOTO  
STUDIO /  
SHOOT  
LOCATION.**

# ABOUT

Located five minutes from midtown manhattan in Long Island City, Eclectic Studios is housed in a former Pepsi Cola factory built in 1936.

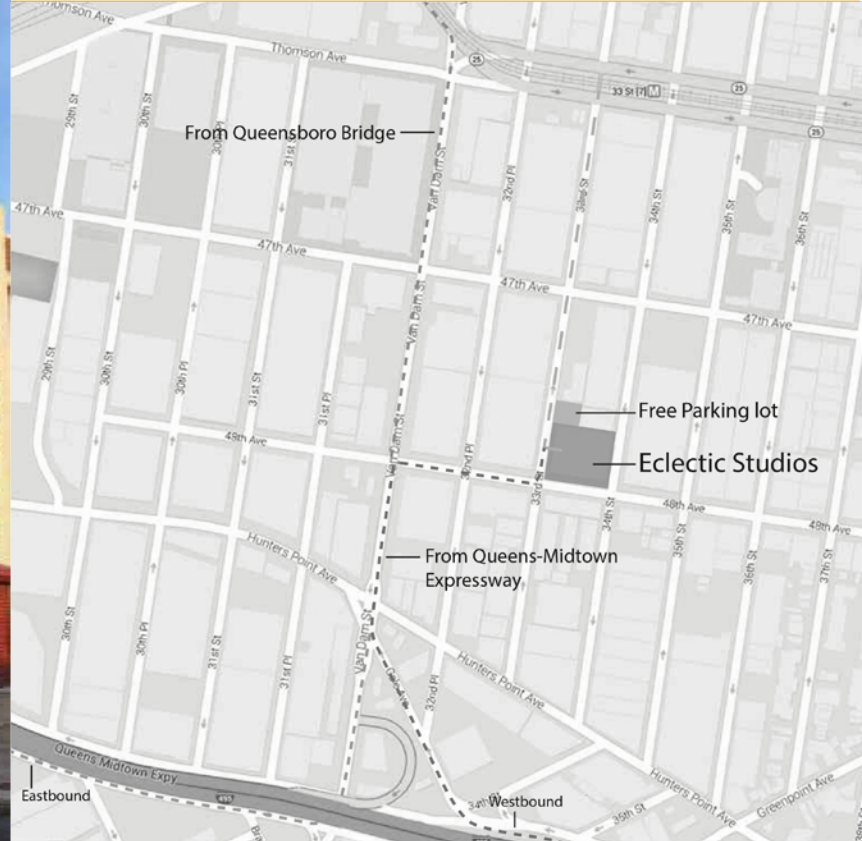
Totaling just over 95,000 sq ft, the old factory has been re-purposed to house a impressive collection of over one million props.

With countless immersive environments and a large professional studio space, Eclectic is an ideal shoot destination.

With every studio booking at Eclectic, you will receive 50% off all props in the building.

Our mission is to make your project as easy and efficient as possible.

# LOCATION



**By Train:** 7 local to 33rd Street-Rawson

**By Car:** Blocks from the Queens Midtown Expressway, easy from the Queensboro bridge. Westbound: Exit 17, right onto Van Dam St, right onto 48th Ave, left onto 33rd St. Eastbound: Exit 13, left at fork, right at the next fork, continue onto 21st St, right onto 49th ave, Continue onto Hunters Point Ave, left onto 33rd St.

**From Queensboro Bridge:** continue onto Queens Blvd, left onto Van Dam St, left onto 48th Ave, left onto 33rd St

**\* FREE CUSTOMER PARKING LOT**

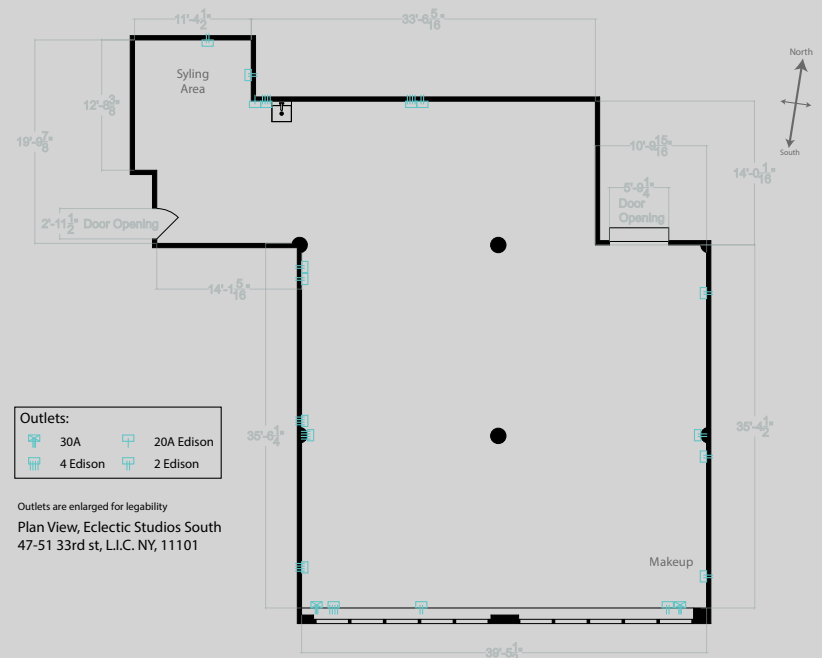


# SOUTH STUDIO

**Day Rate:** \$850/5hrs, \$1350/10hrs

**Weekends:** \$1000/5hrs, \$1600/10hrs

- + 3,000 sq ft - 2nd floor
- + 32' of bright South facing windows
- + 14' ceiling height
- + Air conditioning
- + Freight elevator opens up right into the studio
- + Easy access to the 2nd floor prop house
- + Separate Studio Hi Speed WiFi
- + 100 amps 3 phase power with additional duplex outlets
- + Styling area with Steamer, racks and painter's slop sink



LOCATIONS

LOCATIONS

**LOCATIONS**



ALL HERE





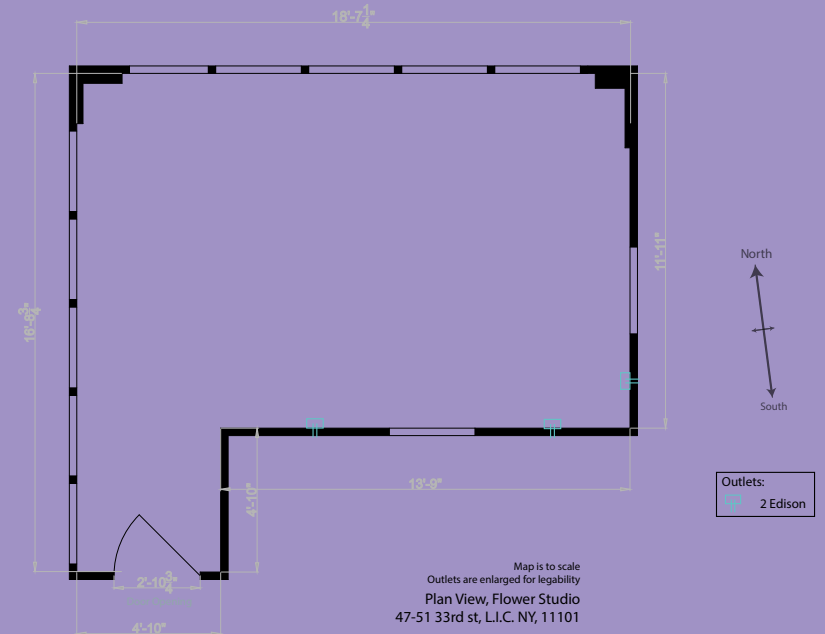
# FLOWER ROOM

**Day Rate:** \$1500/8hrs

**Weekends:** \$1800/8hrs

This room is an experience like no other. Bright and light. Gladiolas, lilies, Daisies, Sweetheart Roses, Tulips, Delphiniums, Dogwood Blossoms, Japanese Maple, Carnations, Sweet Pea Blossoms, Peonies, Hydrangeas, Orchids and Poppies are the setting among beautiful furniture. This peaceful bright and light room is a scene from The Great Gatsby.

\*This room has been dressed in these images below to show you the different variations of sets you can create using our props and does not reflect these images exactly the same\*







# SCHOOL ROOM

Day Rate: \$3500/8hrs  
Weekends: \$4000/8hrs

This 800 sq ft room has been recreated to stage a period classroom. The room contains over 20 wooden desks with chairs. Chalk boards and over 20 globes to pick from. Shelves of books and huge windows flooding a golden light. The entrance to the room acts as a locker hallway. This would be a perfect set for a still life shoot to a film project.

\*This room has been dressed in these images below to show you the different variations of sets you can create using our props and does not reflect these images exactly the same\*





# DANISH ROOM

\*You can create this room in our South Photo Studio with rented props.

This room has been dressed in these images below to show you the different variations of sets you can create using our props.





# FRENCH ROOM

\*You can create this room in our South Photo Studio with rented props.

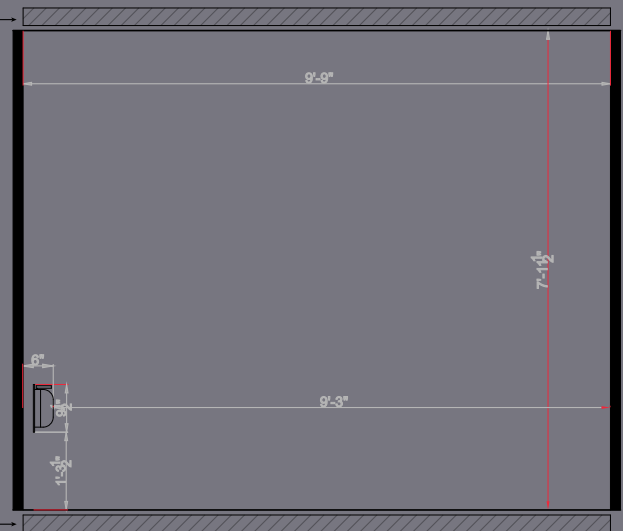
This room has been dressed in these images below to show you the different variations of sets you can create using our props.



# FREIGHT ELEVATOR

Rate: \$150/hr

Door heights:  
1st Floor: 84"  
2nd Floor: 81 1/2" (Door  
closest to studio)  
3rd Floor: 81 3/4"



Door heights:  
1st Floor: 96"  
2nd Floor: 93 1/2"  
3rd Floor: 93 1/2"

Plan View, Eclectic Studios Freight Elevator  
47-51 33rd st, L.I.C. NY, 11101

# RATES

additonal information

## DISCOUNT:

A 50% discount is applied off ALL props when arranged prior to your shoot day at ECLECTIC STUDIOS. You will only receive a 25% discount if arranged on day of the shoot.

## ADDITIONALS:

Overtime rate\* \$150 (1st hr.), \$200 (addl. hr.) Early/Late\* (before 8a, after 8p) Same as OT rate

## OVERTIME

Overtime fees billed per hour and are incurred if studio is occupied by client/talent/crew anytime outside of hours reserved. ECLECTIC STUDIOS reserves the right to deny overtime for any cause whatsoever.

Charges for use outside normal studio hours (8a-8p) are billed in addition to overtime (if applicable).

# EQUIPMENT

<b>SOUTH STUDIO INCLUDED EQUIPMENT</b>	<b>QTY</b>
Wardrobe rack	3
Accessories table	2
Hangers	30
Screens	2
Jiffy steamer	1
Makeup stations	1
High speed Wi-Fi (1.5 Mbit/s)	
Bose Speaker system with remote	
Client seating area	
Production area with table and chairs	
Folding tables	4
Small refrigerator	1
Painters sink	

# EQUIPMENT

FOR RENTAL	PRICE		PRICE
<b>Lighting:</b>		<b>MISC:</b>	
Canon Speedlite 430EX 2	\$ 40.00	Sand Bag	\$5.00/ea
		4' x 8' Flats	\$150.00/ea
		8' x 10' Flats	\$225.00/ea
		10' x 12' Flats	\$300.00/ea
<b>Accessories:</b>		4' x 8' Sheets of Acrylic	\$60.00/ea
Equipment Cart on Wheels	\$ 35.00	Jacks	\$20.00/ea
Manfrotto Auto Pole (for mounting up to 12' seamless)	\$ 100.00	A Clamps	\$2.00/ea
ETTL Flash Cord (fits Canon)	\$ 10.00	Painting Fee (includes paint)	\$150.00/per flat
Manfrotto Tripod w/ Rotating Ball Grip Head & Quick Release	\$ 10.00	12' Seamless Paper	\$5.00/ft
		9' Seamless Paper	\$3.00/ft
<b>Printer:</b>		White Plinth Blocks (please contact studio)	\$50.00 - \$100.00
Epson R3000 Inkjet Printer (capable of up to 13" x 19" prints)	\$ 150.00	Cordless Drills	\$10.00/ea
Power cable		Ladder	\$10.00/ea
USB 2.0 Connection		Black 3" Gaffers Tape	\$35.00/ea
Inks		Iron	\$10.00/ea
		Ironing Board	\$10.00/ea
		Robe	\$35.00/ea
		Slippers	\$15.00/ea
		Towel	\$15.00/ea
		Tablecloth	\$20.00/ea

# CONTACT

Eclectic Photo Studios  
47-51 33rd Street  
Long Island City, NY, 11101  
Tel: 212.645.8880 Fax: 212.243.6508  
[www.eclecticphotostudios.com](http://www.eclecticphotostudios.com)

Suri Bieler  
[suri@eclecticprops.com](mailto:suri@eclecticprops.com)